



<http://www.samsungyepp.com>

Samsung Electronics America Inc.
105 Challenger Road, Ridgefield Park, N.J. 07660

SERVICE DIVISION
400 Valley Road, Suite 201
Mount Arlington, NJ 07856
TEL: 1-800-SAMSUNG (1-800-726-7864)

AH68-01224G

SAMSUNG

VY-H200



DIGITAL VOICE RECORDER

voice yepp™

- MP3 File Playback
- Voice Recording (Max 27 hrs)
- Voice Operating Record (V.O.R)
- 3 COLOR LCD Support
- External Input Monitoring
- Microphone/Recording Mode Selection
- Use as a removable Disk
- Voice Editing & E-mailing
- Play Speed Control [\pm 60%]



Preparations

Safety Instructions	4
Features.....	6
Components	8

Connections

Using with a PC	12
Manual Installation of the USB Driver	16
Downloading/Uploading files	18
Using the Voice yepp Player	19
Functions in VOICE MODE	21
Functions in CAM MODE	23

Usage

Turning Voice yepp On	24
Voice Recording	25
Playing a File	26
Deleting a File.....	28
Recording with an External Microphone.....	29
Menu Setup (when a MP3 folder is selected)	30


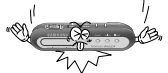
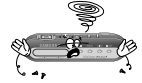


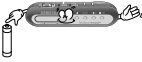


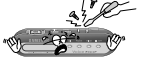
Customizing Options (when a MP3 folder is selected)	31
● EQ Mode	31
● RPT Mode	32
● Intro Scan Function	33
● LCD LIGHT.....	34
● BEEP Mode	35
Menu Setup (when a voice recording folder is selected)	36
Customizing Options (when a recording folder is selected).....	37
● Voice Recording Mode.....	37
● Microphone Mode.....	38
● VOR Function.....	39
● External Device Connection	40
● Monitoring Function	41
● Book Mark Function	42
Loop Repeat Setup.....	43

Customer Support

Troubleshooting	44
Product Specifications	46
Safety Information	48
Warranty	50

Safety Instructions

Read and understand all the instructions to avoid injury to yourself and damage to the equipment.

<p>Do not expose to extreme temperatures (above 95°F or below 23°F). Do not expose to moisture.</p> 	<p>Do not apply excessive pressure to the device.</p> 	<p>Do not let any foreign matter spill into the device.</p> 
<p>Do not place heavy objects on top of the device.</p> 	<p>Do not expose to chemicals such as benzene and thinners.</p> 	<p>Remove batteries when the device is left unused for a long period of time.</p> 
<p>Do not expose to direct sunlight or heat sources.</p> 	<p>Do not store in dusty areas.</p> 	<p>Do not try to disassemble and repair the device yourself.</p> 

Using Earphones

Follow Traffic Safety Instructions

- Do not use the earphones while driving an automobile or riding a bicycle. It's not only dangerous, but also against the law.
- To avoid injury, do not listen at high volumes when walking down the street, especially when crossing intersections.

Protect your ears

- Do not turn up the volume too high. Doctors warn against prolonged exposure to high volume.
- Stop using the device or turn the volume down if you have ringing in your ears.

Ambient operating conditions

- Ambient temperature: 5°C ~ 35°C (41°F ~ 95°F)
Humidity : 10 ~ 75%

Environmental Information

- Follow local guidelines for waste disposal when discarding packages, batteries, and old electronic appliances.
- The packaging materials consist of PS and PVC. No other unnecessary material is used for the packaging.

Features

What is a Digital Recorder?

It is a compact sized device that can record and save large amounts of music on a memory chip without using a tape.

■ Long Recording

Mode Model	LP (Long Play)	SP (Standard Play)	HQ (High Quality)	SHQ (Super- High Quality)
VY-H200 T (32MB)	13 hours and 35 minutes	11 hours and 15 minutes	2 hours and 10 minutes	1 hour and 25 minutes
VY-H200 S (64MB)	27 hours and 10 minutes	22 hours and 30 minutes	4 hours and 25 minutes	2 hours and 55 minutes

■ File Download Into a PC

You can download not only voice and MP3 files to your Voice yepp, but all files saved in your PC as well. You can use it as a removable disk drive, as all files saved in your Voice yepp (other than MP3 files) can be uploaded to another PC.

■ Repeated Play Function

You can select specific tracks for repeated play.

■ Microphone/Recording Mode Selection

You can select the input level of the microphone, depending on the distance to the sound source and the surrounding noise levels.

Features

■ Output Monitoring of External Devices

When you connect your Voice yepp to an external device, you can monitor the output of the device and select a specific track for recording at an accurate level by setting up the Monitor function.

■ Auto Power-Off Function

The power is automatically turned off when the product is not in use for longer than one minute.

■ Management of Recording Folders

You can record in five separate folders (A, B, C, D and E). MP3 files can only be played when saved in the MP3 folder.

■ INTRO SCAN Function

You can quickly search through many recordings by scanning each recording for 10 seconds.

■ Voice Editing and E-mailing Functions

When connected to a PC you can edit recordings and send using the Voice yepp player program.

■ VOR (Voice Operating Record) Function

You can set the product to activate when a sound or voice is detected.

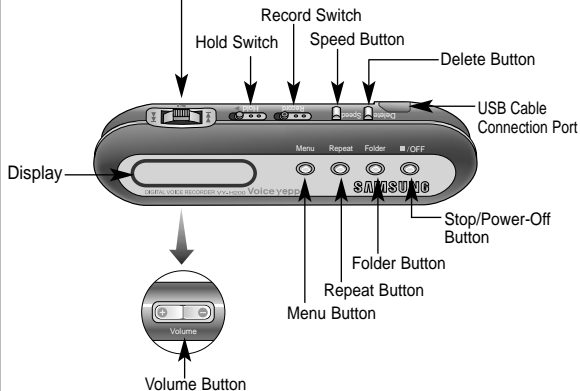
Components

Front

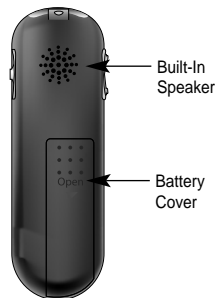
Play/Pause Button

▶||: Power-On, Play, Pause

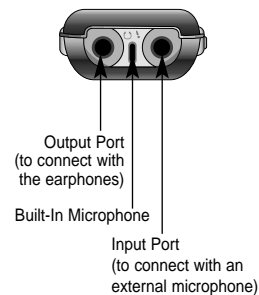
◀◀, ▶▶: Speed Search, Rewind/Fast Forward



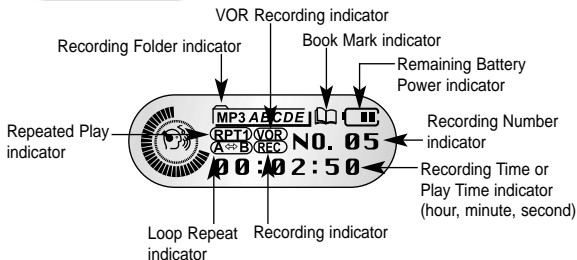
Rear



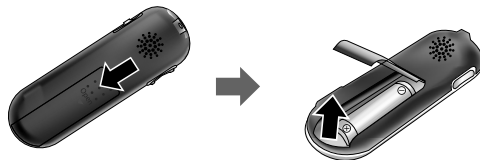
Left



Display



Inserting a Battery



- 1 Push open the battery cover in the direction of the arrow.
- 2 Lift up the battery cover, insert the battery with its poles in the correct position and close the cover.

Accessories



USB Cable

H200 S: AH39-00471A
H200 T: AH39-00471B



Earphones / External Microphone

H200 S: AH30-00053A
H200 T: AH30-00053B



Installation CD

AH80-00047A



AA/LR6 Battery x 1
4301-000101



User Manual
AH68-01224G



Hand Strap
AH61-01283A

Battery Life

The battery life is based on the AA/LR6 alkaline battery

Mode	Recording (SP mode)	Voice Recording Mode	MP3 Mode
		Earphone Play (based on VOL 10)	Earphone Play (based on VOL 10)
Life	10hrs	10hrs	10hrs



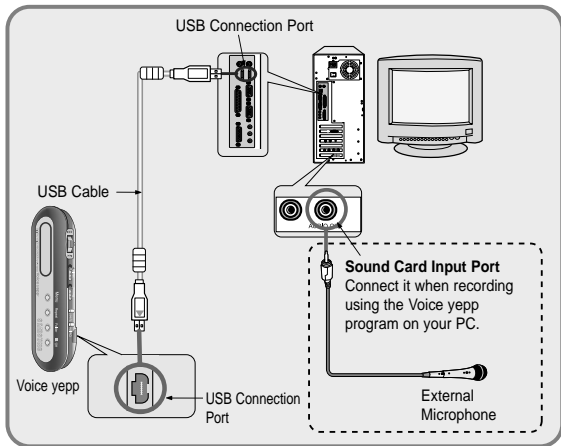
- Recordings will not be deleted when changing batteries.
- Battery life may significantly vary depending on the type and duration of play and volume.

Using with a PC

You can copy recordings from your Voice yepp to a PC or vice versa by using the Voice yepp program and installing a USB driver. You can also record, play and edit recordings on these devices and transmit voice files attached to e-mails.

Connecting Voice yepp to a PC

Connect Voice yepp to a PC as shown in the picture using the USB cable.



System Requirements

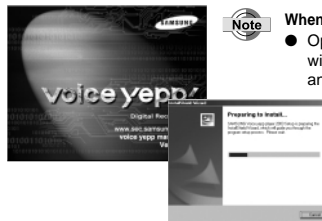
- Computer: IBM compatible with Pentium or greater that supports the USB port
- Memory: 64MB or greater
- O/S: Windows 98 / 98 SE / 2000 / Me / XP
- Remaining Hard Memory; 100MB or greater
- Sound Card
- Microphone (for recording), speaker (for playback)



● Connect it using the correct ends of the USB cable.

Software Installation

When the installation CD is inserted in the CD-ROM drive, the CD will run automatically and the following display will appear.



Note When the CD does not run automatically:

- Open 'My Computer' in the desktop window, open the CD-ROM drive, and double click on Setup.exe.



Click



Click

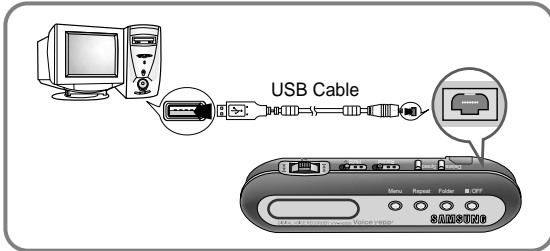
- The installation of Voice yepp will begin.

► **To delete the Voice yepp program:**

- The 'Delete' window will automatically appear when the program CD is inserted in the CD-ROM drive.

Connecting to a PC Using the USB Cable

- 1 Connect the USB cable to the USB port on your PC.
- 2 Connect the opposite end of the USB cable to the USB cable port at the top of your Voice yepp.
 - The Power of yepp will automatically turn on.
- 3 The message 'Searching for new device' indicates the USB driver will be installed. The window showing the installation status may not appear. Check the 'Device Manager' to see if the installation has been completed correctly.



- 4 Upon installation of the USB driver 'USB Mass Storage Device' will appear in the 'Device Manager'.

Note ● Connect it using the correct ends of the USB cable.

To Check the USB Driver

● Windows 98/ME:

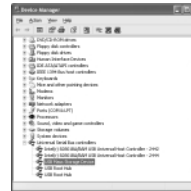
Controller → System → Device Manager → Universal Serial Bus Controller → SAMSUNG VY-H200, YEPP USB Mass Storage Device

● Windows 2000 (Professional version):

Controller → System → Hardware → Device Manager → Universal Serial Bus Controller → USB Mass Storage Device

● Windows XP (Professional version):

Controller → System → Hardware → Device Manager → Universal Serial Bus Controller → USB Mass Storage Device



(Windows XP version)

- 5 Please refer to 'Manual Installation of the USB Driver' if the USB driver has not been installed as above.



● For WinXP, the following window will appear whenever you connect the USB cable to your Voice yepp.

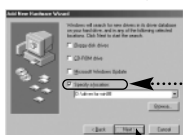


● Click **[Cancel]** to use the Voice yepp.

Manual Installation of the USB driver

Turn the power on , connect it to a PC and install as instructed below:

For Win 98



Insert the installation CD into the CD-ROM drive



Location of the USB driver
[CD ROM]D:Driver for win98



▶ Click **[Finish]** and restart the system.



When an error occurs during installation of the USB driver:

Reinstall the driver in the following ways:

Start → Setup → Controller → System →
Device Manager → Select the Driver (or Device)
in error and double click. →



(Windows 98 version)



(Windows 98 version)

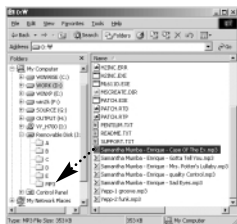
Click **[Next]** → **[Finish]**.



- The installation method may vary depending on the type of PC or operating system. Contact your PC dealer or service center for installation information.

Downloading/Uploading files

- 1 Turn on the Voice yepp and connect it to a PC
- 2 Open Windows Explorer on the PC.
- 3 Select a file to save, then drag and drop the file in the folder of your choice.
 - To save in Voice yepp, drag and drop the file in folder A, B, C, D, E or MP3 inside the 'removable disk directory'.



Notes for Downloading or Uploading Files

- "USB WRITING" is displayed on the main body during uploading or downloading. When complete, "USB STAND-BY" will be displayed. Disconnect the USB cable when "USB STAND-BY" is displayed.
- When your Voice yepp is connected to a PC that runs with Windows 2000 or later, the icon to delete a drive () will appear in the lower part of the task bar. For Windows 2000 or later versions, run this program before you disconnect the USB cable.
- Name files using the format: 'Voice01', 'Voice02', ... 'Voice99' when you download a voice file into folders A, B, C, D or E in Voice yepp, as Voice yepp can only recognize files using this name format.
- Download only files with the .VY * extension in folders A, B, C, D or E in Voice yepp, and files with the .mp3 extension in the MP3 folder. Voice yepp cannot recognize files with other extensions.
- Sort files before downloading, if possible, as the downloaded files are automatically re-sorted and saved when you disconnect the USB cable from your Voice yepp after downloading .VY * files. (e.g. files named 'Voice02', 'Voice03', 'Voice10' will be automatically saved as 'Voice01', 'Voice02', and 'Voice03' respectively.)
- It is illegal to upload MP3 files. Voice yepp has a built-in MP3 encryption function. You will experience poor sound quality from a MP3 file that is uploaded to your PC.
- The maximum number of MP3 files to be recognized for downloading is 250. Any more than this number can be downloaded but cannot be played.

Using the Voice yepp player

Double click the Voice yepp player 2003 icon on the desktop to open the program.



(Voice yepp player Main Window)

- **VOICE MODE:** for recording, playing of voice files, editing and e-mailing
- **CAM MODE:** for viewing and editing image files (.bmp or .jpg extension files)
- **Volume:** for volume control during file play
- **Minimize:** for downsizing the program window
- **Close:** for ending the program
- **Help:** to display the player version and web site address
- **Open:** to display the list of selected files
- **Save:** for saving the list of selected files
- **E-mailing:** for attaching saved voice files to an e-mail

Opening a File

Press the **Open** button in the main window and the File Open dialog box will appear as shown below.

- You are automatically moved to VOICE MODE or CAM MODE when you click to open a voice or cam file.



- You can use this product as an additional storage device in Windows Explorer as it is recognized as a removable disk. You can therefore save any file as well as voice or music files in this product, just as you would save them in a removable disk, and use the files on a PC.
- When you formatted Voice yep in your PC, please re-format Voice yep in itself. (Please refer to page 45 for formatting)

E-Mailing

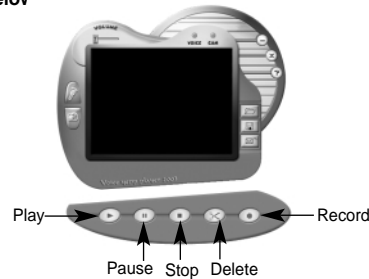
- Select a voice file to attach to the e-mail by pressing the Open button.
- After selecting a file, press the E-mailing button in the main window. A window will appear as shown below.



- To send the mail, click the Send button.
- When emails are not successfully sent, check if the default email setup on Internet Explorer is the Internet email program that you use usually.
- To check the mailing setup: Internet Explorer → Tools → Internet Options → Program → E-Mail(Microsoft Outlook, Outlook Express, Hotmail)

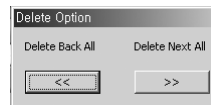
Double click the Voice yep player 2003 icon on the desktop to open the program.

Click the VOICE MODE button and a picture will appear as shown below



To Delete

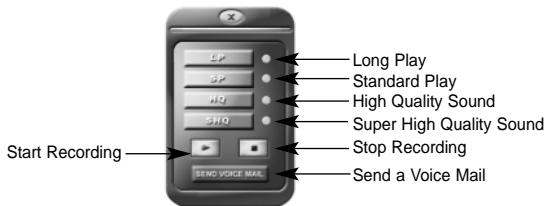
1. Press the Open button to select a voice file.
2. The selected file will automatically play.
3. After the desired track has been played, press the Pause (||) button.
4. Click the Delete button and a picture will appear as shown below.
 - **Delete Back All:** All recorded tracks prior to the point where you pressed the pause button will be deleted.
 - **Delete Next All:** All recorded tracks after the point where you pressed the pause button will be deleted.



5. To save, press the Save button in the Save As dialog box.
 - All tracks selected for deletion will be deleted and the remainder will be saved as a .VY * file.

Recording

Click the Record button and the record mode window will appear as shown below.



The top 4 buttons are used for different recording modes. After recording you can play or send voice mails.

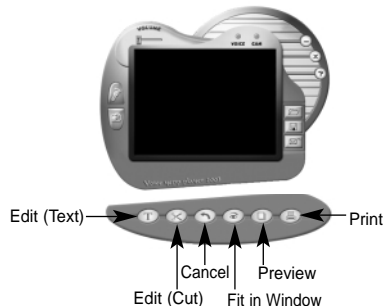
1. Select the recording mode and click the Start Recording (▶) button.
 - Recording will commence.
2. To stop recording, click the Stop Recording (■) button.
 - To save after recording, click the Save button in the main window. Select a folder, type in the file name, and press the Save button to complete. .VY1, .VY2, .VY3 etc. are the names of voice recording files.
 - To send mail, click the **SEND VOICE MAIL** button.
 - To check the mailing setup:
Internet Explorer → Tools → Internet Options → Program → E-Mail

Note

- Connect a microphone to the PC before recording.
- When there is no sound while playing after having recorded with the Voice yepp player, check the "Recording Control" setup and correct if necessary.
- Please refer to Windows Help for more information about "Recording Control".

Double click the Voice yepp player 2003 icon on the desktop to open the program.

Click the CAM MODE button and a picture will appear as shown below.



- Select an image file using the Open button. You can select bmp and jpg extended image files.
- **To Write**: Click the Text button, click at the place to write, and the Text Edit dialog box will appear. Type in letters, select font, size and color, and press the OK button to save the writing on the image.
- **To Cut**: Click the Cut button, select the passage to save, and press the Cut button again. The selected passage will remain but the rest will be deleted.
- **To Cancel**: To cancel during editing, press the Cancel Edit button.
- **Fit in Window**: Double click the image in the main window, or click the Fit in Window button to view the image in actual size.
- **To Print an Image File**: When the image file of your choice appears in the main window, click the Print button in the menu window to print. To view the image to be printed, click the Preview button to preview, and confirm to print.

Turning Voice yepp On

To Turn the Power On

Press and hold the Play/Pause (▶||) button with the Hold function deselected.

- The power will be turned on.



● Recording can commence while the power is off by pushing the **Record** switch in the direction of the arrow.

To Turn the Power Off

Press and hold the OFF (■) Button.

- The power will be turned off.



● The power will be automatically turned off when the Voice yepp is left idle for longer than 1 minute.

Note

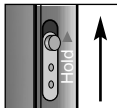
- Turning the power on will not illuminate the LCD light.

Hold Function

This function will disable all buttons while maintaining the current operation. However, the recording function will operate when the Hold function is in use.

Slide the Hold switch in the direction of the arrow.

- The product is in Lock Mode.

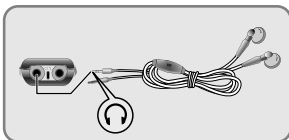


Listening with Earphones

You can listen by using earphones.

Connect the earphones to the output port.

Adjust the sound volume with the **Volume** button.



Voice Recording

You can record voices by using the built-in microphone or an external microphone.

- 1** Press and hold the **Play/Pause** (▶||) button to turn on the Voice yepp.
- 2** Select a file for recording by pressing the **Folder** button.
 - The folders will appear in the order of A → B → C → D → E → MP3, each time you press the button. Select a folder among A, B, C, D and E.
- 3** Slide the **Record** switch in the direction of the arrow.
 - The recording number and time will appear and recording will commence.
 - The recording numbers are assigned in sequential order (i.e. SHQ#01, SHQ#02). Each folder can save up to 99 files.
 - Recording within the MP3 folder will automatically move the recording to Folder A. If there are 99 files already in Folder A, the recording will automatically move to Folder B.
 - Point the microphone toward the source of sound when recording.

Note

- All functions other than Hold will be disabled during recording.
- By connecting the earphones during recording, you can listen to the recording as it occurs.
- The Volume button will be disabled during recording.

To Stop Recording

Slide the Record switch in the opposite direction for recording.

- Recording will stop and be saved automatically.

To view the remaining recording time

Press and hold the Folder button when stopped.

- The time available for further recording within the current recording mode will be displayed.

Displayed During Recording

- **INDEX FULL**: 99 files are saved in all folders from A to E.
- **MEMORY NO SPACE**: memory is full.
- **WRITING**: the voice file is currently being saved in the memory.
- **CODE#1 WARNING** :
 - Fractions of files remain in Voice yepp due to frequent file upload and download.
 - Back-up all files saved in your Voice yepp, and then delete all the files using the ALL-DIR delete function.

Playing a File

- 1 Press and hold the **Play/Pause** (▶||) button to turn on the Voice yepp.
- 2 Select a file for playing by pressing the **Folder** button.
 - The folders will appear in the order of A → B → C → D → E → MP3, each time you press the button. Select the folder of your choice.
- 3 Select a file to play using the ◀◀ . ▶▶ switch.
- 4 Press the **Play/Pause** (▶||) button.
 - Play will commence and the playing time will be displayed.
- 5 To stop playing, press the **Stop** (■) button.
 - The playing will stop.

To Pause the Playing

Press the **Play/Pause** (▶||) button.

- The playing will be paused.
- When the power is turned off in the Pause mode, switch the power on and press the **Play/Pause** (▶||) button to play from the point where the unit had been turned off.

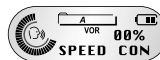
To Play a Specific Track

- Press and hold the ◀◀ . ▶▶ switch during play to move to the next or previous track. Release the play to return to normal play.
- The longer you press the ◀◀ . ▶▶ button the faster the search speed.

Adjusting the Speed of Play

This can only be enabled when a voice file is selected.

- 1 Select a voice file for speed control, and press the **Speed** button.



- 2 Select the speed of play using the ◀◀ . ▶▶ switch.
 - The speed of play can be adjusted by 5% increments from the basic speed (00%) up to -60% ~ +60%.
 - The higher the number, the faster the speed of play, and the lower the number, the slower the speed of play.

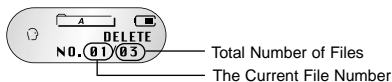


- The speed of play will automatically be set to normal when the power is turned off or the battery is replaced.

Deleting a File

To Delete a Music or Voice File:

- 1 Press and hold the **Play/Pause** (▶||) button to turn on the Voice yepp.
- 2 Select the folder containing the files to be deleted by pressing the **Folder** button.
- 3 Press the **Delete** button once.



- 4 Select the file to be deleted by pressing the ◀◀, ▶▶ switch.

- 5 Press and hold the **Delete** button.

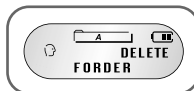
- The selected file will be deleted and the files remaining in the folder will be automatically rearranged.



- Files previously book-marked will not be deleted.
- Files can also be deleted in Windows Explorer on PC.

To Delete All Files Within a Folder

- 1 Press the **Delete** button twice.
 - Select the folder to be deleted using the ▶▶ switch.
 - By pressing the ◀◀ switch, the total number of files will be displayed.
- 2 Press and hold the **Delete** button.
 - All files in the selected folder will be deleted.



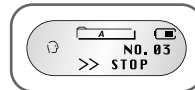
To Delete All Files Saved in Voice yepp

- 1 Press the **Delete** button three times.



- 2 Press and hold the **Delete** button once more.

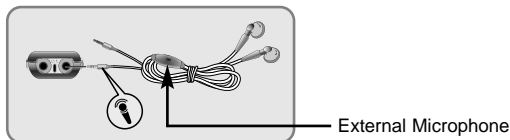
- All files will be deleted.
- You will be returned to Stop Mode if you briefly press the Delete button once more.
- If "CODE#1 WARNING" is displayed on the Voice yepp, delete all files using this function.



Recording with an External Microphone

You can record voices while in motion by using an external microphone.

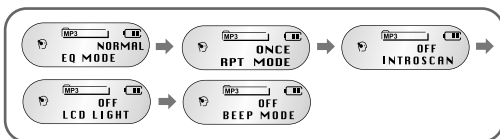
Connect the microphone as shown in the following picture. Follow the steps provided under 'Voice Recording' for recording.



Menu Setup (when a MP3 folder is selected)

- 1 Press and hold the **Play/Pause** (▶||) button to turn on the Voice yepp.
- 2 Select a MP3 folder by pressing the **Folder** button.
- 3 Press the **Menu** button, and use the **Play/Pause** (▶||) button to move to the desired function.

- You can select any function while in Stop Mode.



- Only EQ MODE, RPT MODE and INTRO SCAN functions are enabled while in Play Mode.



- 4 Press the **Menu** button once more to select a function and then you will be returned to the previous screen.
- After selecting a menu, press **Play/Pause** (▶||) to move to the next menu. By doing so, you can set other menus.

- **EQ MODE:** to activate the equalizer function
- **RPT MODE:** to play all files within a folder once or repeatedly
- **INTROSCAN:** to quickly search for a saved file
- **LCD LIGHT:** to select a color for the LCD display
- **BEEP MODE:** to select a beeping sound for pressed buttons



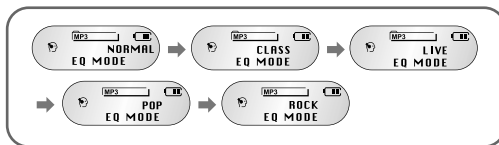
- In Stop Mode, the Menu Mode will close if no buttons are pressed within 15 seconds.
- In the Play mode, the Menu Mode will close if no buttons are pressed within 5 seconds.

Customizing Options (when a MP3 folder is selected)

EQ Mode

- 1 Press the **Menu** button, and select the **EQ MODE** by using the **Play/Pause** (▶||) button.
- 2 Move to the desired mode by using the ◀◀, ▶▶ button.

- You will toggle between NORMAL, CLASS, LIVE, POP and ROCK mode, each time you press the button.

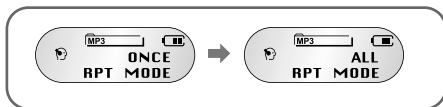


- 3 Press the **Menu** button to save the setup.

RPT Mode

You can play all music files saved in the MP3 folder once or repeatedly.

- 1 Press the **Menu** button, and select **RPT MODE** by using the **Play/Pause (▶|)** button.
- 2 Select **ONCE** or **ALL** by using the **◀◀ . ▶▶** button.



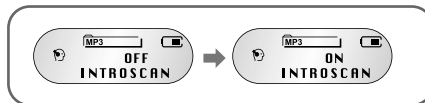
- **RPT ONCE:** Plays all music files saved in the MP3 folder once.
- **RPT ALL:** Plays all music files saved in the MP3 folder repeatedly.

- 3 Press the **Menu** button to save the setup.

Intro Scan Function

You can easily search voice or music files by scanning each file for 10 seconds.

- 1 Press the **Menu** button, and select **INTROSCAN** by using the **Play/Pause (▶|)** button.
- 2 Select **OFF** or **ON** by using the **◀◀ . ▶▶** button.



- **INTROSCAN OFF:**
All saved music files will play normally.
- **INTROSCAN ON:**
Each music file will play for 10 seconds.

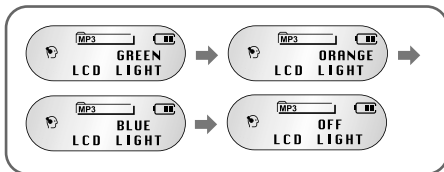
- 3 Press the **Menu** button to save the setup.

LCD LIGHT

You can enjoy the LCD in three different colors.

1 Press the **Menu** button, and select **LCD LIGHT** by using the **Play/Pause** (▶||) button.

2 Select a color by using the **Left** (◀) . **Right** (▶) button.



- **GREEN:** green LCD
- **ORANGE:** orange LCD
- **BLUE:** blue LCD
- **OFF:** The LCD light will not illuminate

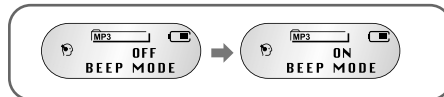
3 Press the **Menu** button to save the setup.

BEEP Mode

You can set the buttons to beep when they are pressed.

1 Press the **Menu** button, and select **BEEP MODE** by using the **Play/Pause** (▶||) button.

2 Select **OFF** or **ON** by using the **Left** (◀) . **Right** (▶) button.



- **BEEP OFF:** disables the beeping
- **BEEP ON:** enables the beeping, each time a button is pressed

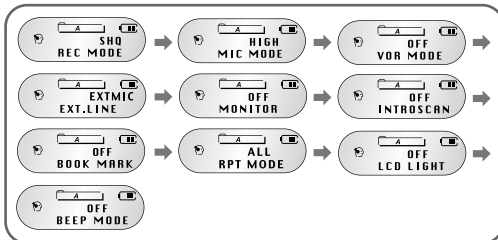
3 Press the **Menu** button to save the setup.

Note

- The LCD light will not illuminate during voice recording.

Menu Setup (when a voice recording folder is selected)

- 1 Press and hold the **Play/Pause** (▶||) button to turn on the Voice yepp.
- 2 Select a file for recording from folder A, B, C, D or E by pressing the **Folder** button.
- 3 Press the **Menu** button, and use the **Play/Pause** (▶||) button to move to the desired function.
 - You can select any function while in Stop Mode.
 - Only RPT MODE and INTRO SCAN functions are enabled while in Play Mode.



- 4 Press the **Menu** button once more to select a function and then you will be returned to the previous screen.
 - After selecting a menu, press the **Play/Pause** (▶||) to move to the next menu. By doing so, you can set other menus.

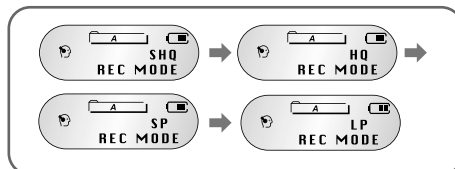


- Please refer to 'Customizing Options (when a MP3 folder is selected)' for information on INTRO SCAN, LCD LIGHT, BEEP MODE and RPT MODE functions.
- In Stop mode, the Menu Mode will close if no buttons are pressed within 15 seconds.
- In Play mode, the Menu Mode will close if no buttons are pressed within 5 seconds.

Customizing Options (when a voice recording folder is selected)

Voice Recording Mode

- 1 Press the **Menu** button, and select **REC MODE** by using the **Play/Pause** (▶||) button.
- 2 Select a Recording mode by using the **◀◀**, **▶▶** button.

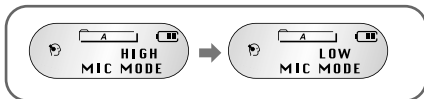


- **SHQ mode**: records in Super High Quality mode
 - **HQ mode**: records in High Quality mode
 - **SP mode**: records in Standard Play mode
 - **LP mode**: records in Long Play mode
- 3 Press the **Menu** button to save the setup.

Microphone Mode

You can adjust the input volume of the microphone depending on the distance to the sound source and surrounding noise levels.

- 1 Press the **Menu** button, and select **MIC MODE** by using the **Play/Pause** (▶||) button.
- 2 Select **HIGH** or **LOW** by using the **◀◀** . **▶▶** button.



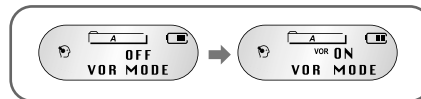
- **HIGH:** Select when there is a long distance to the sound source or there is no surrounding noise.
 - **LOW:** Select when there is a short distance to the sound source or there is a lot of surrounding noise.
- 3 Press the **Menu** button to save the setup.

VOR Function

What is VOR (Voice Operating Record)?

It is a voice activated recording function where recording is activated when there is a sound, and pauses when there is no sound.

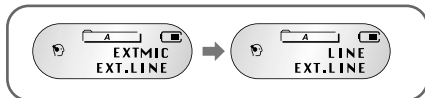
- 1 Press the **Menu** button, and select **VOR MODE** by using the **Play/Pause** (▶||) button.
- 2 Select **OFF** or **ON** by using the **◀◀** . **▶▶** button.



- **VOR OFF:** to continue recording when there is no sound during recording.
 - **VOR ON:** to pause recording automatically when there is no sound during recording.
- 3 Press the **Menu** button to save the setup.

External Device Connection

- 1 Press the **Menu** button, and select **EXT.LINE** by using the **Play/Pause** (▶|) button.
- 2 Select an external device by using the **◀◀**, **▶▶** button.



- **EXTMIC**: to record with an external microphone
- **LINE**: to record with an external audio device
- To record with an external device, first connect the Line Out port of the external device (such as a PC, Audio or Stereo device) to the Line In port of Voice yep.

- 3 Press the **Menu** button to save the setup.

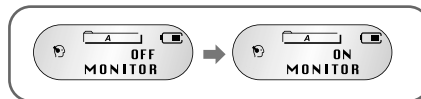


- Normal recording will be disabled when recording with an external audio device in the external Microphone mode (EXTMIC mode).

Monitoring Function

- You can select a specific track to record with an external device as this function enables you to determine the starting point for recording.
- You can monitor the recording only with earphones when the Monitoring function is selected.

- 1 Press the **Menu** button, and select **MONITOR** by using the **Play/Pause** (▶|) button.
- 2 Select **OFF** or **ON** by using the **◀◀**, **▶▶** button.

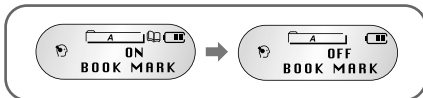


- Pressing any button (except Volume and Hold) will disable the Monitoring function.

Book Mark Function

You can mark a voice file that contains an important message.

- 1 Move to the voice file to be marked within folder A, B, C, D or E.
- 2 Select **BOOK MARK** by pressing the **Menu** button.
- 3 Select **OFF** or **ON** by using the **◀▶** button.



- When **BOOK MARK ON** is selected:
" " will be displayed on the selected voice file.
- To disable the function, select **BOOK MARK OFF**.

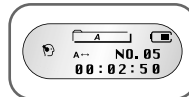
- 4 Press the **Menu** button to save the setup.

Loop Repeat

The Beginning of the Loop:

Press the Repeat button at the beginning of the loop you want to set while the music or voice file is playing.

"A↔" will appear on the display.

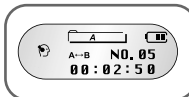


The End of the Loop:

Press the Repeat button once more at the end of the loop you want to set.

"A↔B" will appear on the display.

The selected loop will be played repeatedly.



- To disable the Loop Repeat function, press the Repeat button once more.

To Play a File Repeatedly

- 1 Press the **Repeat** button when the product is in Stop Mode.
 - Select the file to be repeated and the file will play repeatedly while displaying "RPT1".
- 2 Press and hold the **Repeat** button while playing.
 - The file currently playing will play repeatedly while displaying "RPT1".
- 3 To disable the Repeat function, press the **Repeat** button while in Stop mode, or press and hold the **Repeat** button while in the Play mode.

Troubleshooting

No display on the LCD.

Check point 1 Is the battery dead? ▶ Replace the battery.

Check point 2 Are the battery poles positioned correctly? ▶ Insert the battery with its poles in the correct position.

Recording is disabled.

Check point 1 Are the recording numbers all used up or is recording memory full? ▶ Delete unnecessary files.

Check point 2 Is the battery dead? ▶ Replace the battery.

Playing is disabled.

Check point 1 Is the product in Hold mode? ▶ Release the Hold switch.

Check point 2 Is there anything to record? ▶ Check the recording number.

Check point 3 Is the battery dead? ▶ Replace the battery.

Check point 4 Is a MP3 file saved in a voice folder or a voice file saved in a MP3 folder? ▶ Save the file in the correct folder.

No sound is heard from the speaker.

Check point 1 Is the volume set to '0'? ▶ Adjust the volume.

Check point 2 Are the earphones plugged-in to the product? ▶ Unplug the earphones.

No sound is heard from the earphones.

Check point 1 Is the volume set to '0'? ▶ Adjust the volume.

Check point 2 Are the earphones correctly plugged-in to the product? ▶ Plug-in the earphones correctly.

None of the buttons work.

Check point 1 Is the backlight illuminated on the LCD? ▶ Remove and re-insert the battery.

All saved files will be deleted and the product will be initialized when the Play/Pause button is pressed and held while holding the Folder button with the Voice yepp power off. Do not repeat this action in vain as it may cause a break down.

Cannot connect the unit to a PC.

Check point 1 Have you connected the USB cable in the correct way? ▶ Disconnect the USB cable and re-connect. If the problem persists, re-boot the PC.

Formatting (You will lose all data in the Voice yepp.)

- Re-Format the Voice yepp if the defect was caused by an external impact.
- ➔ Turn the power off of Voice yepp. Press and hold the Play/Pause button while holding the Folder button. Your Voice yepp is now initialized.

Model Name	VY-H200 T/VY-H200 S
Product Dimensions	1.42(W) X 4.45(H) X 0.73(D)inchs
Weight	2.6 oz. (inc. battery)
Power	AA/LR6 1.5V X 1EA
Recording Media	FLASH MEMORY (32MB/64MB)
Maximum Number of Recordings in Memory	495 Recordings
Maximum Operation Output	4mW (EARPHONE)
Frequency Range	400Hz ~ 3.5KHz
Input	Built-in Non-directional Electric Condenser Microphone (mono) Plug-in Power Microphone (mini plug/mono) less than 3K IMP
Output	Earphones (mini plug/stereo) more than 16 IMP
Conditions for Operation	23mm Dia, 8 Speaker
	Temperature Range 41°F ~ 95°F

Safety Information

FCC Part 15: This equipment has been tested and found to comply with the limits for a Class B digital device, pursuant to Part 15 of the FCC Rules. These limits are designed to provide reasonable protection against harmful interference in a residential installation.

This equipment generates, uses, and can radiate radio frequency energy and, if not installed and used in accordance with the instructions, may cause harmful interference to radio communications. However, this notice is not a guarantee that interference will not occur in a particular installation. If this equipment does cause harmful interference to radio or television reception, which can be determined by turning the equipment off and on, the user is encouraged to try one or more of the following measures:

- Reorient or relocate the receiving antenna.
- Increase the distance between the equipment and receiver.
- Connect the equipment to an outlet on a circuit different from that to which the receiver is connected.
- Consult the dealer or an experienced radio/TV technician.

Modifications

Any changes or modifications not expressly approved by the grantee of this device could void the user's authority to operate the device.

Compliance

This product conforms to the following Council Directive:

- Directive 89/336/EEC, 92/31/EEC(EMC)

Declaration of Conformity

Name: Samsung Electronics Co., Ltd
Address: 416, Maetan-3Dong, Paldal-Gu, Suwon City, Kyungki-Do, Korea 442-742

declares under its sole responsibility that the product
Trade Name: Samsung Electronics Co., Ltd
Model Number: VY-H200

has been tested according to the FCC/CISPR22/95 requirements for Class B devices and found compliant with the following standards
EM/EMC: AnSI C63.4 1992, FCC Part 15 Subpart B
This device complies with part 15 of the FCC Rules.

Operation is subject to the following two conditions:

1. This device may not cause harmful interference, and
2. This device must accept any interference received, including interference that may cause undesirable operation.

Party Responsible for Product Compliance

Samsung Electronics America
QA Lab.
3351 Michelson Dr. Suite #290
Irvine, CA92612

Warranty

Samsung warrants this product as free of defects in material, design and workmanship for the period of twelve(12) months from the original date of purchase.

If during the period of warranty this product proves defective under normal use and service, you should return the product to the retailer from whom it was originally purchased. The liability of Samsung and its appointed maintenance company is limited to the cost of repair and/or replacement of the unit under warranty.

Return of the product for defective reasons should be to the original purchaser, however Samsung Authorized Dealers and Authorized Service Centers will comply with the warranty on the terms issued to purchasers in the country concerned, for further information relating to the Authorized Service Centers contact.

1-800-SAMSUNG (1-800-726-7864)
www.samsungyepp.com

WARRANTY CONDITIONS:

1. The warranty is only valid when the warranty card is properly completed, and upon presentation of the proof of purchase consisting of original invoice or sales slip confirmation, indicating the date of purchase, dealers name, model, serial No. and product number. Samsung reserves the right to refuse warranty service if this information has been removed or changed after the original purchase of the product from the dealer.
2. Samsung's obligations are to the repair of the defective part, and at its discretion, replacement of the product (service exchange unit).
3. Warranty repairs must be carried out by an Authorized Samsung Dealer/Service Center. No reimbursement will be made for repairs carried out by non Samsung Centers, and warranty coverage will not be valid for any repairs or damage caused by such repairs.
4. Repair or replacement under the terms of this warranty does not give right to extension to or a new starting of the period of warranty. Repair or direct replacement under the terms of this warranty may be fulfilled with functionally equivalent service exchange units.

5. The warranty is not applicable in cases other than defects in material, design and workmanship. The warranty does not cover the following:

- ◆ Periodic checks, maintenance, repair and replacement of parts due to normal wear and tear.
 - ◆ Abuse or misuse, including but not solely limited to the failure to use this product for its normal purpose or in accordance with Samsung's instructions usage and maintenance.
 - ◆ The product has been used in conjunction with accessories not approved by Samsung for use with this product.
 - ◆ Failure of the product arising from incorrect installation or use not consistent with technical or safety standards in current force, or failure to comply with product manual instructions.
 - ◆ Accidents, Acts of God or any cause beyond the control of Samsung caused by lightning, water, fire, public disturbances and improper ventilation.
 - ◆ Unauthorized modifications carried out for the product to comply with local or national technical standards in countries for which the Samsung product was not originally designed.
 - ◆ Repairs performed by non-authorized service centers such as opening of the product by a non-authorized person.
 - ◆ The model, serial No. and product number on the product has been altered, deleted, removed or made illegible.
6. This warranty does not affect the consumers statutory rights nor the consumers rights against the dealer from their purchase/sales agreement.

THERE ARE NO EXPRESS WARRANTIES OTHER THAN THOSE LISTED AND DESCRIBED ABOVE, AND NO WARRANTIES WHETHER EXPRESS OR IMPLIED, INCLUDING, BUT NOT LIMITED TO, ANY IMPLIED WARRANTIES OF MERCHANTABILITY OR FITNESS FOR A PARTICULAR PURPOSE, SHALL APPLY AFTER THE EXPRESS WARRANTY PERIODS STATED ABOVE, AND NO OTHER EXPRESS WARRANTY OR GUARANTY GIVEN BY ANY PERSON, FIRM OR CORPORATION WITH RESPECT TO THIS PRODUCT SHALL BE BINDING ON SAMSUNG, SAMSUNG SHALL NOT BE LIABLE FOR LOSS OF REVENUE OR PROFITS, FAILURE TO REALIZE SAVINGS OR OTHER BENEFITS, OR ANY OTHER SPECIAL, INCIDENTAL OR CONSEQUENTIAL DAMAGES CAUSED BY THE USE, MISUSE OR INABILITY TO USE THIS PRODUCT, REGARDLESS OF THE LEGAL THEORY ON WHICH THE CLAIM IS BASED, AND EVEN IF SAMSUNG HAS BEEN ADVISED OF THE POSSIBILITY OF SUCH DAMAGES. NOR SHALL RECOVERY OF ANY KIND AGAINST SAMSUNG BE GREATER IN AMOUNT THAN THE PURCHASE PRICE OF THE PRODUCT SOLD BY SAMSUNG AND CAUSING THE ALLEGED DAMAGE. WITHOUT LIMITING THE FOREGOING, PURCHASER ASSUMES ALL RISK AND LIABILITY FOR LOSS, DAMAGE OR INJURY TO PURCHASER AND PURCHASER'S PROPERTY AND TO OTHERS AND THEIR PROPERTY ARISING OUT OF THE USE, MISUSE OR INABILITY TO USE THIS PRODUCT SOLD BY SAMSUNG NOT CAUSED DIRECTLY BY THE NEGLIGENCE OF SAMSUNG. THIS LIMITED WARRANTY SHALL NOT EXTEND TO ANYONE OTHER THAN THE ORIGINAL PURCHASER OF THIS PRODUCT, IS NONTRANSFERABLE AND STATES YOUR EXCLUSIVE REMEDY.

.....

Some states do not allow limitations on how long an implied warranty lasts, or the exclusion or limitation of incidental or consequential damages, so the above limitations or exclusions may not apply to you. This warranty gives you specific legal rights, and you may also have other rights which vary from state to state.

This product is for personal use only, and is only for use in compliance with the limitations of copyright and other laws.

To obtain warranty service, please contact SAMSUNG at:
Samsung Electronics America, Inc.
400 Valley Road, Suite 201 Mount Arlington, NJ 07856
Tel: (973) 601-6000, Fax: (973) 601-6001
1-800-SAMSUNG (1-800-726-7864)
www.samsungyep.com
081299